

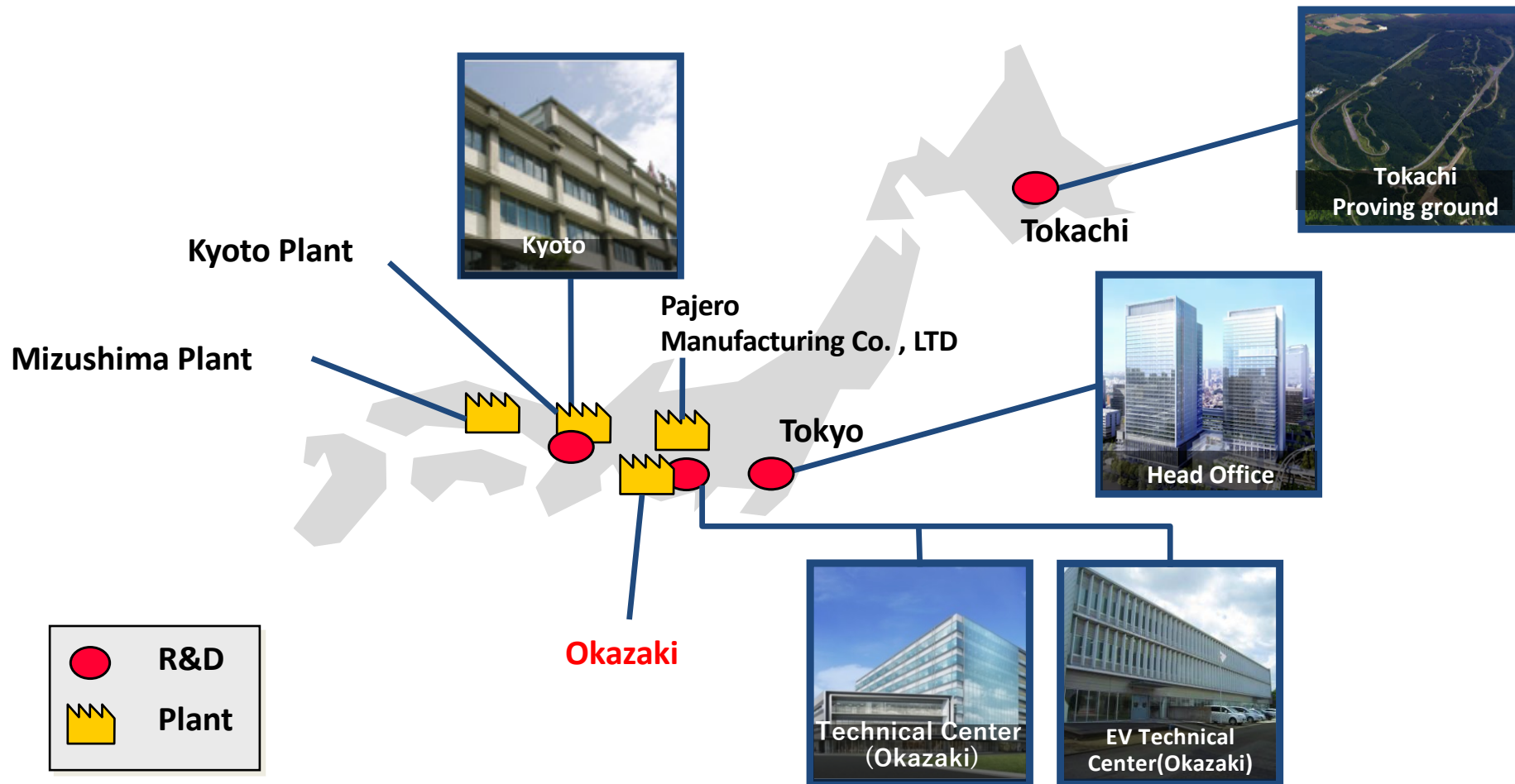
# OKAZAKI Global R&D Center

An Introduction

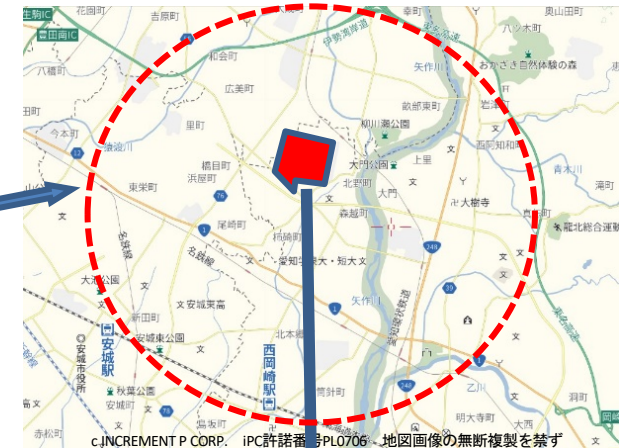
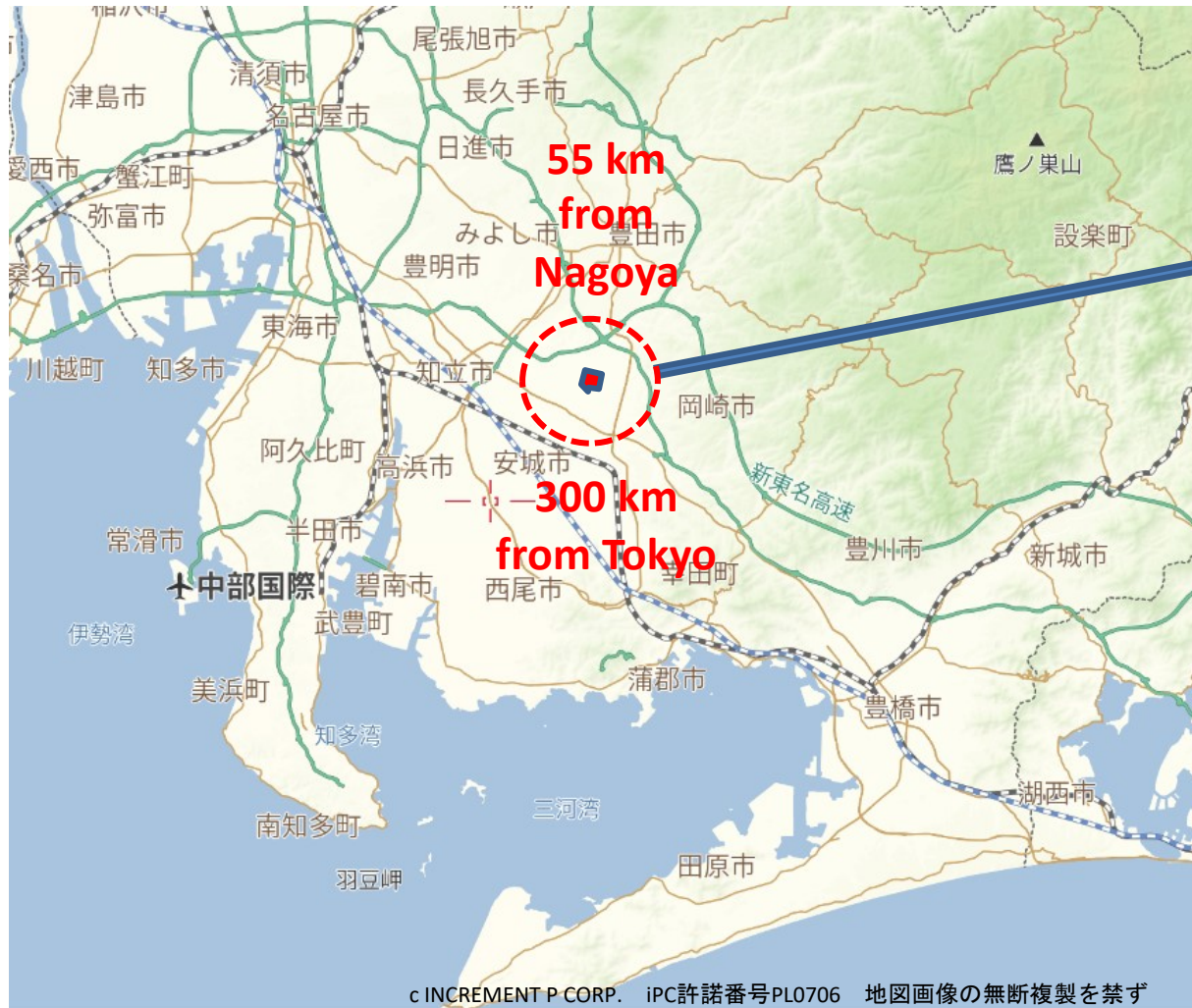
# MMC Global R&D Network



# MMC in Japan



## Okazaki – The Location

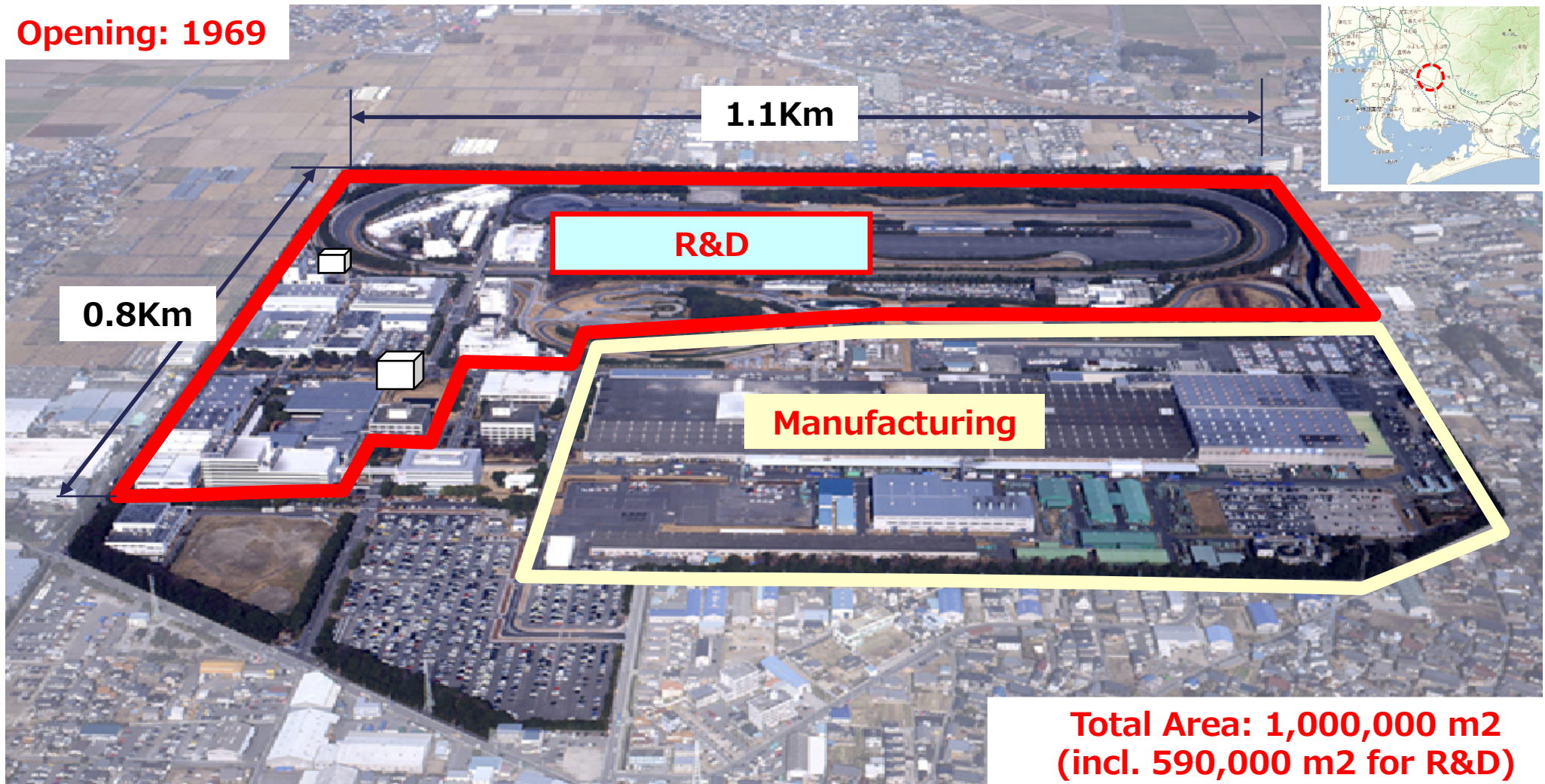




# Okazaki – The Layout



Opening: 1969



## Okazaki – The Activities

---



**Global R&D**



## Okazaki – The Activities

---



**Global Design**

## Okazaki – The Activities

---



**Manufacturing**



## Okazaki – The Activities

---



- 1977 opening
- 3,100 staff
- Outlander,
- Outlander PHEV,
- Eclipse Cross
- 256,000 units / year (2 shifts)

## Okazaki – The Activities



**“Auto Gallery”**



## Okazaki – The € 280 million redevelopment



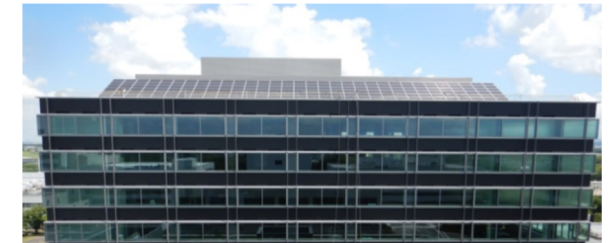
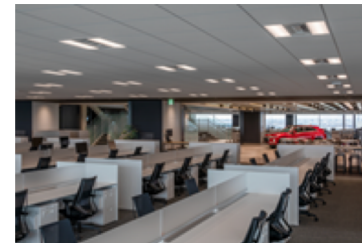
# 1 - New Engineering Tower

- ① Total area : About 34,719m<sup>2</sup>
- ② Staffing : About 2,000 (MMC R&D)

3~8 Floor : Office area / Communication space

2 Floor : Meeting room, Dining room, Cafe

1 Floor : Entrance, Meeting room, Visitor's room, Dining room, Convenience store



Dining room



Meeting room : 700 people



Communication space



## 2 – New Environmental Test Lab



### 3 – New Wind tunnel # 2 (Under construction)

